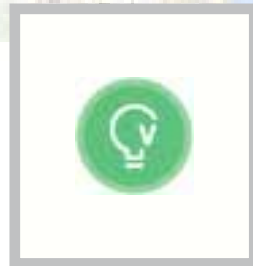
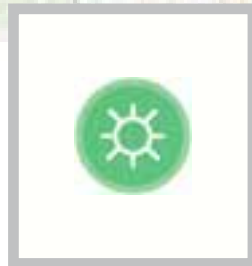
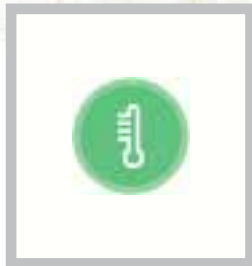




# LOGGERSMAP

WEB BASED SOFTWARE SOLUTION



→ The internet of Things - IoT



# LOGGERSMAP

Easy to use, user-friendly



## Loggersmap - web solution

for

**Industry - Transportation - Health - Energy - Warehouse - Storage**

- ✓ Real-time monitoring from anywhere in the world.
- ✓ Place your sensors on a web map or on embedded images/plans/schematics.
- ✓ Define limits and receive an alert if the limits are exceeded.
- ✓ Easily manage different locations.
- ✓ Give user access to sensors, only as viewer or with management rights.
- ✓ No infrastructure is needed, all data are stored in a secure data center in Switzerland.

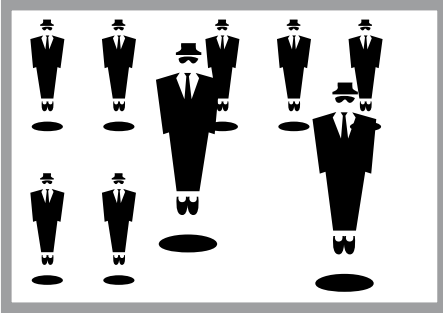


# LOGGERSMAP

Easy to use, user-friendly



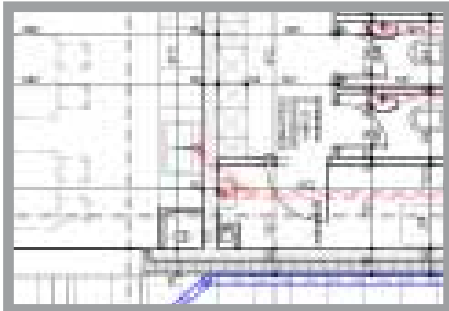
Multi-lingual



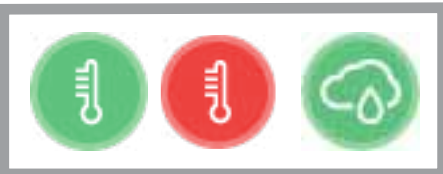
User and group management,  
management of hierarchies and rights



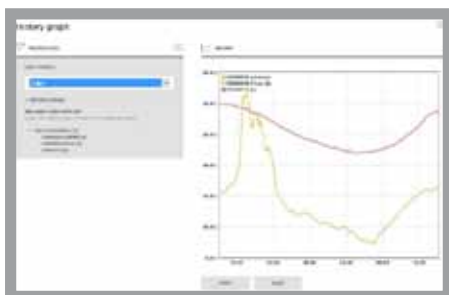
Place sensors on the map, create device groups, assign names to your devices, attach an image, insert URL link.



Place sensors on a map-embedded image. Quickly locate your sensor. Add your favorite places or views



Set alarm value min/max, calibration date. Receive alerts. Alert validation. Transmit alarms to one or more users. Alert history. View data. Calibration management.



Generate graphs from your collected data and from multiple sensors, print history graph, export data to a CSV file.



# LOGGERSMAP

Easy to use, user friendly

[www.loggersmap.com](http://www.loggersmap.com) can be viewed on computers, iPads and Android tablets.

Monitor your datas from everywhere.



Loggersmap enables you to give access to your web-connected devices to users, employees, customers, partners, etc.

Manage user groups, device groups, user rights.

Easily connect your sensor to Loggersmap.

Manage your calibration dates.

Manage alarm history, user comments. Make alarm validation mandatory and check who took a corrective action.

Locate your sensor directly on the map.

Filter and manage your devices in lists, generate graphs, export datas.

Easy navigation, your devices are automatically grouped on the map.

➔ The Internet of Things - IoT



# LOGGERSMAP

Easy to use, user friendly

Quality at an affordable price !

Are you interested ?

Do you wish to receive further informations ?

Would you like to have a demo ?

Then contact us !

Our address:

ThermoLab Sàrl  
Z.I. Le Trési 6D  
1028 Préverenges  
Switzerland  
Tél +41 21 637 12 37  
www.thermolab.ch



Sensors RuuviTags available now with Loggersmap

<https://thermolab.ch/produit/ruuvitag-pro-capteur-temperature-humidite-precis-enregistreur-ip67/>

<https://thermolab.ch/>

→ The Internet of Things - IoT